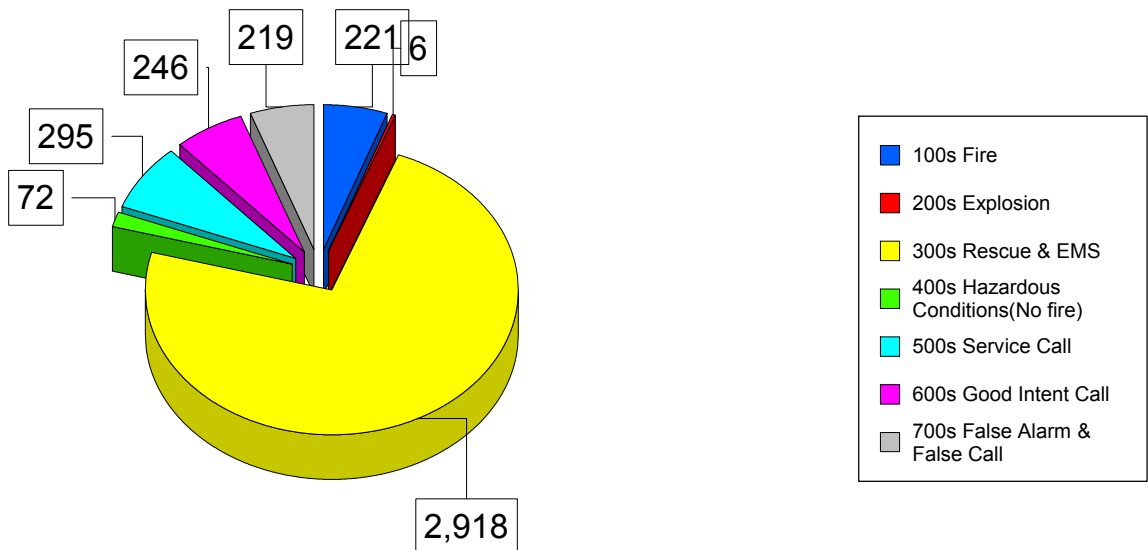


Porterville Fire Department 2009 Response History



Graphed Items are sorted by Incident Type

Type Of Incident:

Total Of Incidents:

Percentage Value:

100 Series-Fire	221	5.56%
200 Series-Explosion	6	0.15%
300 Series-Rescue & EMS	2918	73.37%
400 Series-Hazardous Conditions(No fire)	72	1.81%
500 Series-Service Call	295	7.42%
600 Series-Good Intent Call	246	6.19%
700 Series-False Alarm & False Call	219	5.51%

Grand Total: 3977

Type Of Incident Most Frequent: 300 Series-Rescue & EMS

Print Date: 1/19/2010