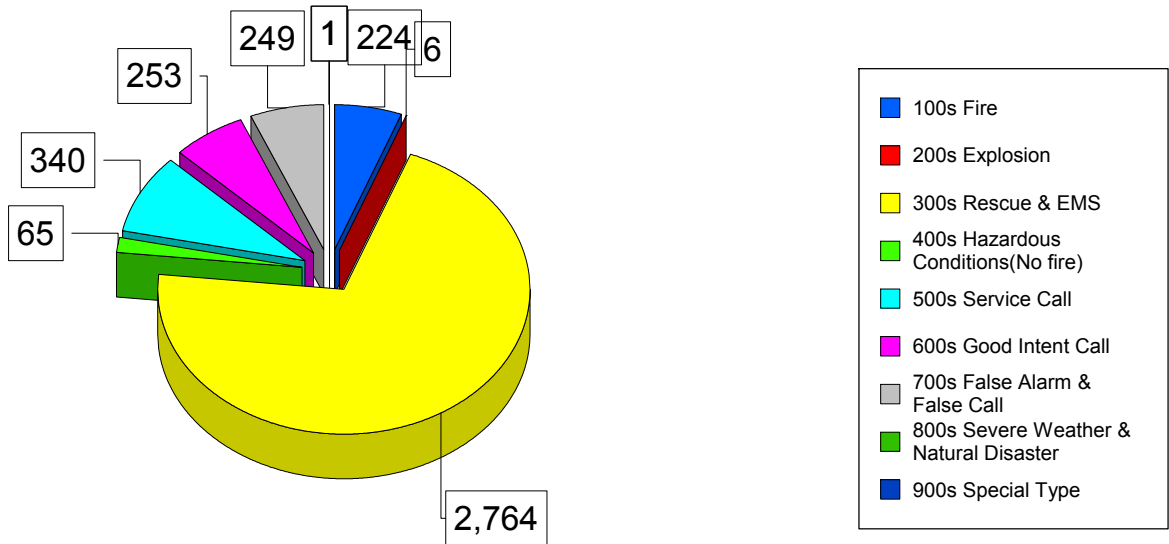


Porterville Fire Department - 2010 Response Totals



Graphed Items are sorted by Incident Type

Type Of Incident:

Total Of Incidents:

Percentage Value:

100 Series-Fire	224	5.74%
200 Series-Explosion	6	0.15%
300 Series-Rescue & EMS	2764	70.82%
400 Series-Hazardous Conditions(No fire)	65	1.67%
500 Series-Service Call	340	8.71%
600 Series-Good Intent Call	253	6.48%
700 Series-False Alarm & False Call	249	6.38%
800 Series-Severe Weather & Natural Disaster	1	0.03%
900 Series-Special Type	1	0.03%

Grand Total: 3903

Type Of Incident Most Frequent: 300 Series-Rescue & EMS

Print Date: 1/10/2011