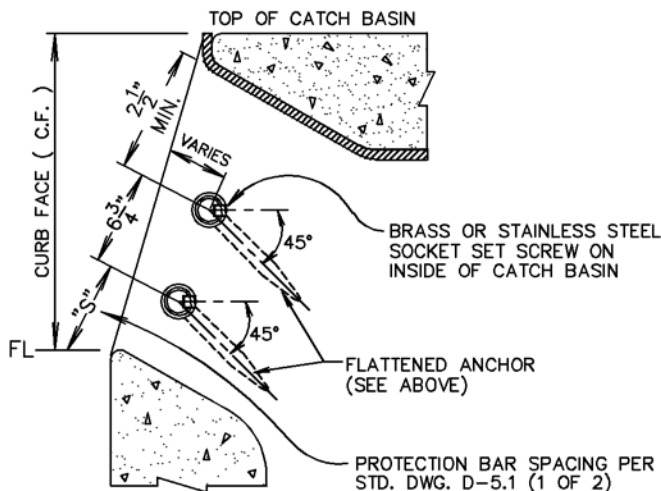
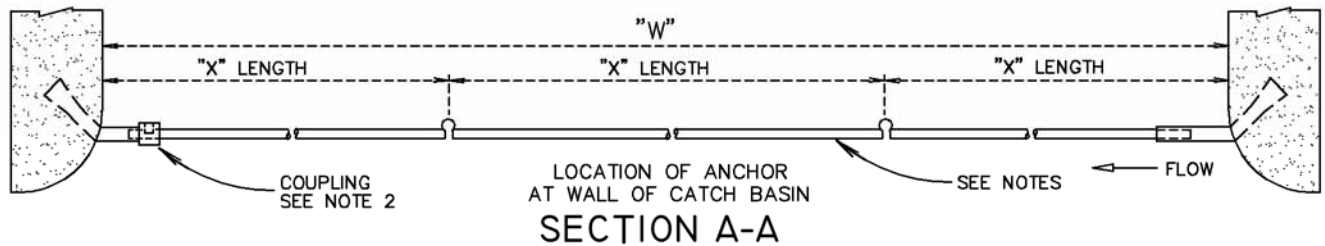
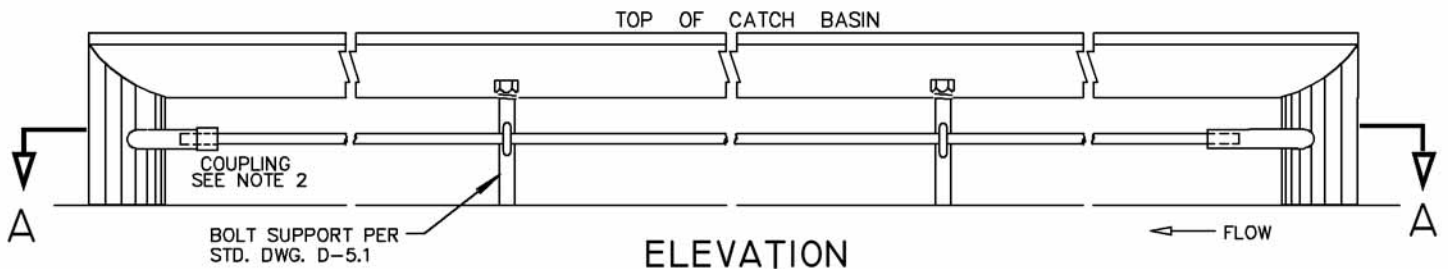


DETAIL OF ANCHOR



"W" (INCL)	NUMBER OF SUPPORT BOLTS	NUMBER OF "X"LENGTHS
5' TO 10'	1	2
10' TO 15'	2	3
15' TO 20'	3	4
20' TO 25'	4	5
25' TO 30'	5	6

NOTES:

1. ALL BARS SHALL BE 3/4" GALV., HOT-ROLLED STEEL PER A.S.T.M. DESIGNATION A-36 BAR. LENGTHS SHALL NOT EXCEED 21' AND SHALL BE CUT TO FIT IN THE FIELD. WHEN "W" IS OVER 21', PROTECTION BAR SHALL CONSIST OF TWO OR MORE SECTIONS DEPENDING ON LENGTH OF BASIN. LOCATION OF SPECIAL SUPPORT BARS AND ADDITIONAL SOCKET SET SCREW SHALL BE DETERMINED BY THE ENGINEER IN THE FIELD.
2. INSTALL COUPLING AT DOWNSTREAM END OF CATCH BASIN OPENING.

CITY OF PORTERVILLE
ENGINEERING DIVISION

Harold L. Hill
CITY ENGINEER R.C.E. 20186 DATE

2-15-99

CATCH BASIN
PROTECTION BAR

D-7

REV.