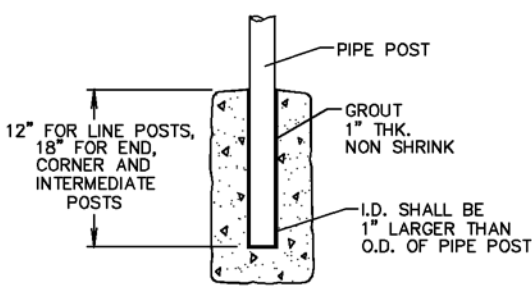
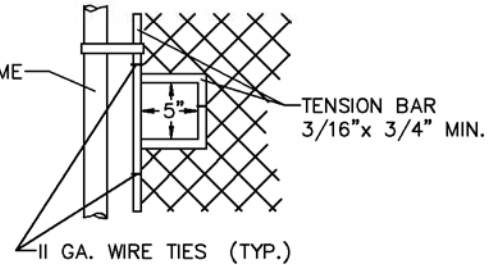


TYPICAL WALK GATE

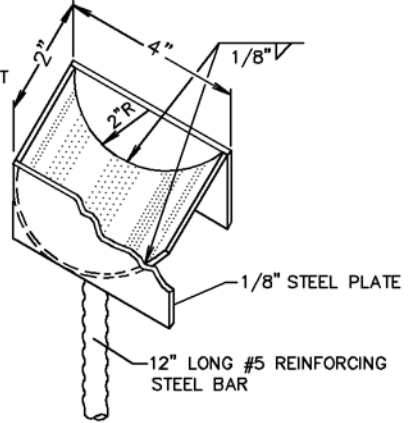
TYPICAL DRIVE GATE



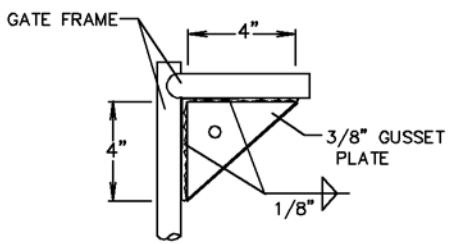
POST EMBEDMENT DETAIL  
CONCRETE HEADWALLS, RETAINING & CHANNEL WALLS, ETC.



CHAIN & LOCK CUT-OUT DETAIL



PLUNGER ROD CUP DETAIL



GUSSET DETAIL

NOTES

1. SECURE DRIVE FIT GALVANIZED CAP TO POST WITH 1/4" ROUND HEAD RIVET.
2. H DENOTES FABRIC WIDTH AND NOMINAL FENCE HEIGHT. H SHALL BE 6'-0" UNLESS OTHERWISE SPECIFIED.
3. IF CHAIN LINK FENCE WITH TOP RAIL IS SPECIFIED, DELETE STEEL TENSION WIRE AT TOP AND THE PIPE RAILS AT INTERMEDIATE, END AND CORNER POSTS. EXTEND TENSION ROD TO THE TOP RAIL.
4. BARBED WIRE SHALL BE USED ONLY WHEN SPECIFIED.
5. ALL DATA SHOWN ON TYPICAL DETAILS SHALL BE APPLICABLE TO OTHER PERTINENT DETAILS.