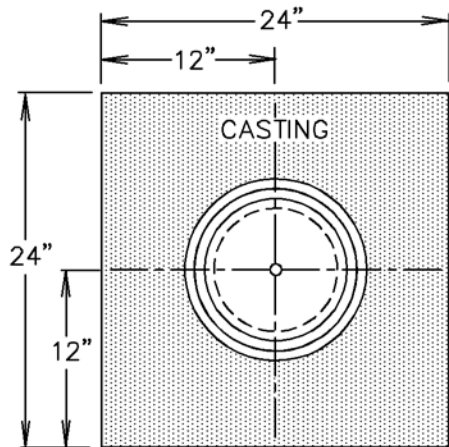
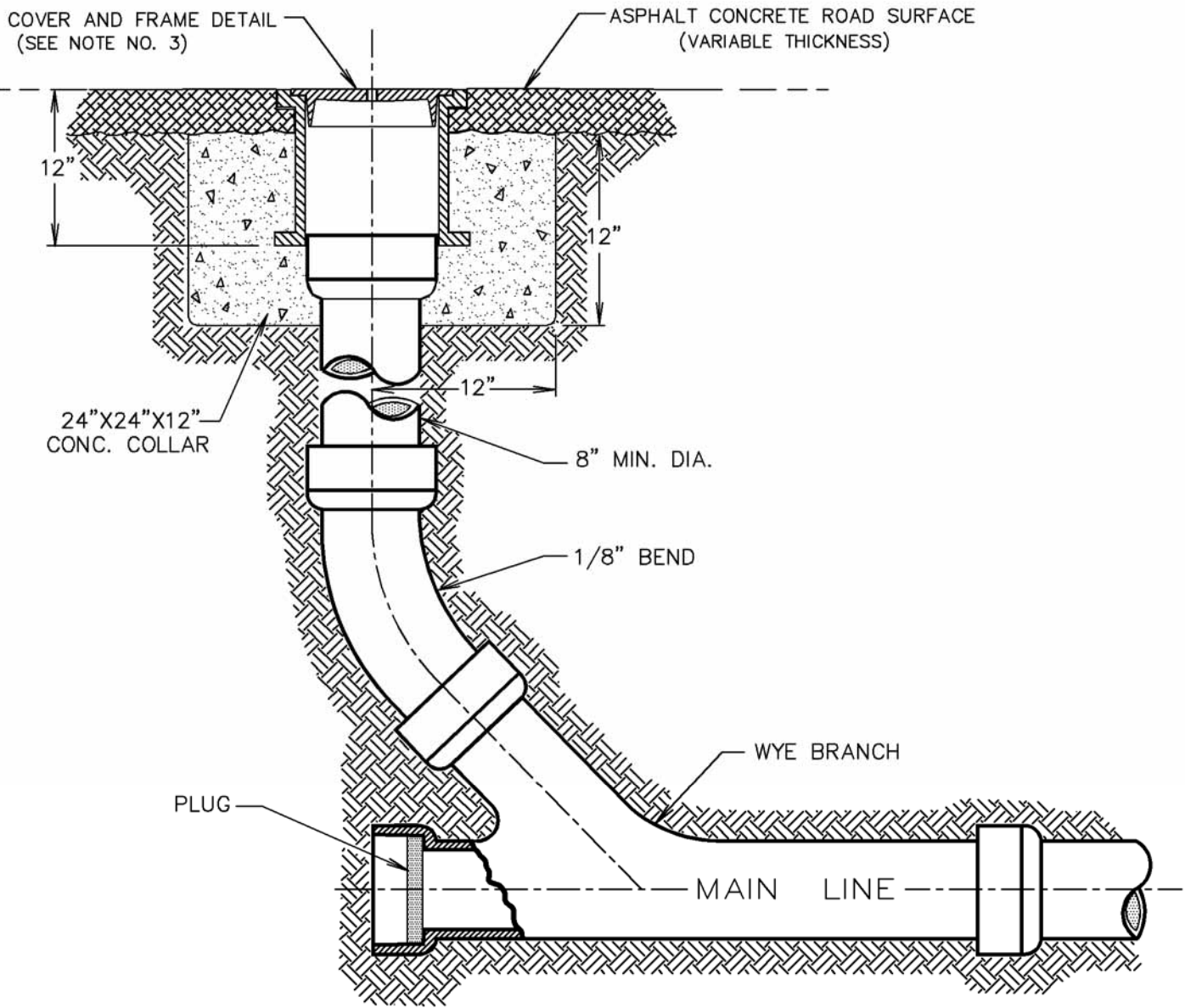


TYPICAL SECTION OF TERMINAL CLEAN-OUT



PLAN

NOTE :

1. ALL MATERIALS AND WORKMANSHIP SHALL CONFORM TO THE REQUIREMENTS OF THE STANDARD SPECIFICATIONS.
2. CLEAN-OUT PIPE MUST BE SAME DIAMETER AS MAIN LINE SEWER.
3. CASTING SHALL BE ALHAMBRA FOUNDRY NO. A-1240 OR EQUAL.
4. ALL CONCRETE SHALL BE 2500# (5 SACK MIX).