

LEUPOLD STEVENS MODEL 61-R
ELECTRIC FLOW RECORDER

LOCKABLE AND REMOVABLE METAL BOX
OR USE STEVENS MODEL TF 132-0 BOX

48" REINFORCED
CONCRETE PIPE

1" PIPE

18"

INLET

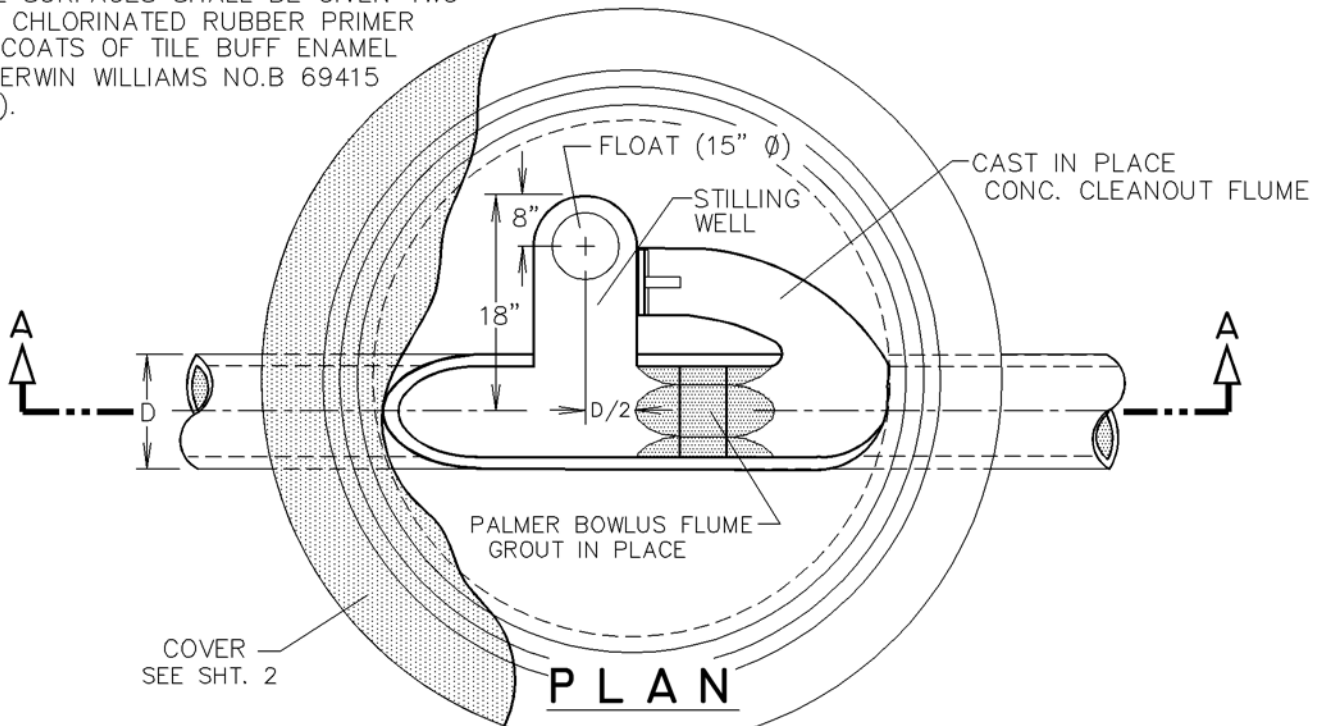
OUTLET

CLASS 'B' CONCRETE
POURED IN PLACE

SECTION A-A

CONFORM TO BEDDING
REQUIREMENTS OF
ASTM D 2321

NOTE :
ALL METAL SURFACES SHALL BE GIVEN TWO
COATS OF CHLORINATED RUBBER PRIMER
AND TWO COATS OF TILE BUFF ENAMEL
PAINT (SHERWIN WILLIAMS NO.B 69415
OR EQUAL).



CITY OF PORTERVILLE
ENGINEERING DIVISION

Harold L. Spill 9-3-85
CITY ENGINEER R.C.E. 20186 DATE

**INDUSTRIAL FLOW
METERING STATION**

S-9
1 OF 2
REV.