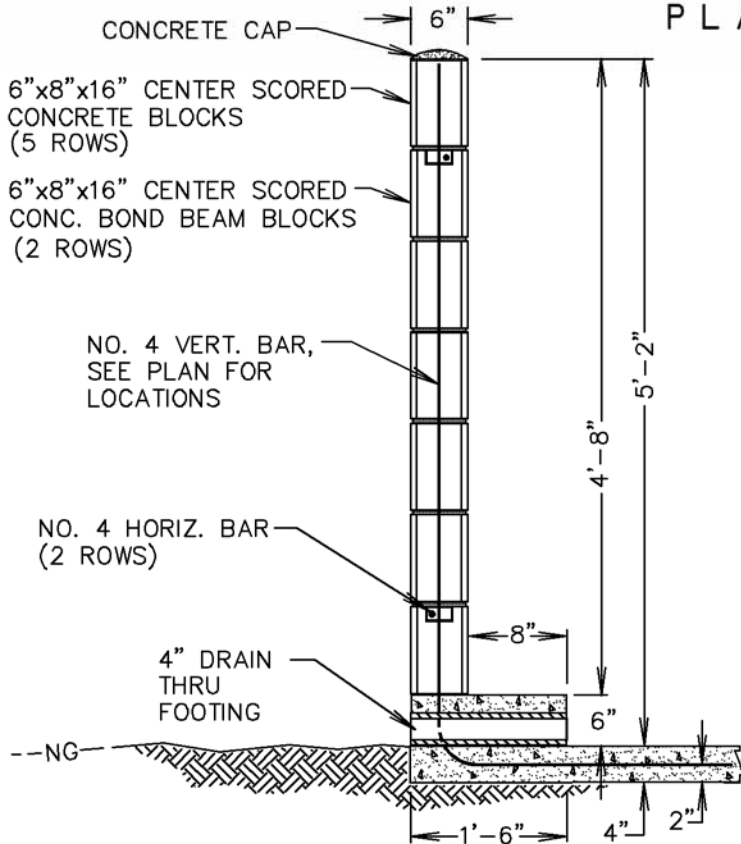


PLAN



SECTION A-A

NOTES:

1. ALL CELLS IN CONCRETE BLOCKS WITH STEEL SHALL BE FILLED SOLID WITH COARSE GROUT.
2. CORNER BLOCK ENDS AND CENTER WEB SHALL BE CUT TO FORM CONTINUOUS BOND SEAM.
3. ALL HORIZONTAL AND VERTICAL JOINTS SHALL BE RAKED TO MATCH CENTER SCORED BLOCK.
4. CONCRETE BLOCK, MORTAR AND COARSE GROUT SHALL CONFORM WITH SECTION 24 OF THE UNIFORM BUILDING CODE 1976 EDITION.
5. SLAB FLOOR AND FOOTING SHALL BE 2500# (5 SACK MIX) PORTLAND CONCRETE CEMENT.
6. GROUND TO BE SLOPED AWAY FROM WALLS.
7. THIS STANDARD IS FOR SINGLE 3 CU.YD. OR SMALLER BINS. SUBMIT DRAWINGS TO THE CITY ENGINEER FOR LARGER OR MULTIPLE BIN ENCLOSURES.

CITY OF PORTERVILLE  
ENGINEERING DIVISION

*Harold L. Hill*  
CITY ENGINEER R.C.E. 20186

9-3-85  
DATE

**MASONRY**  
**TRASH CONTAINER ENCLOSURE**

**T-2**

REV.