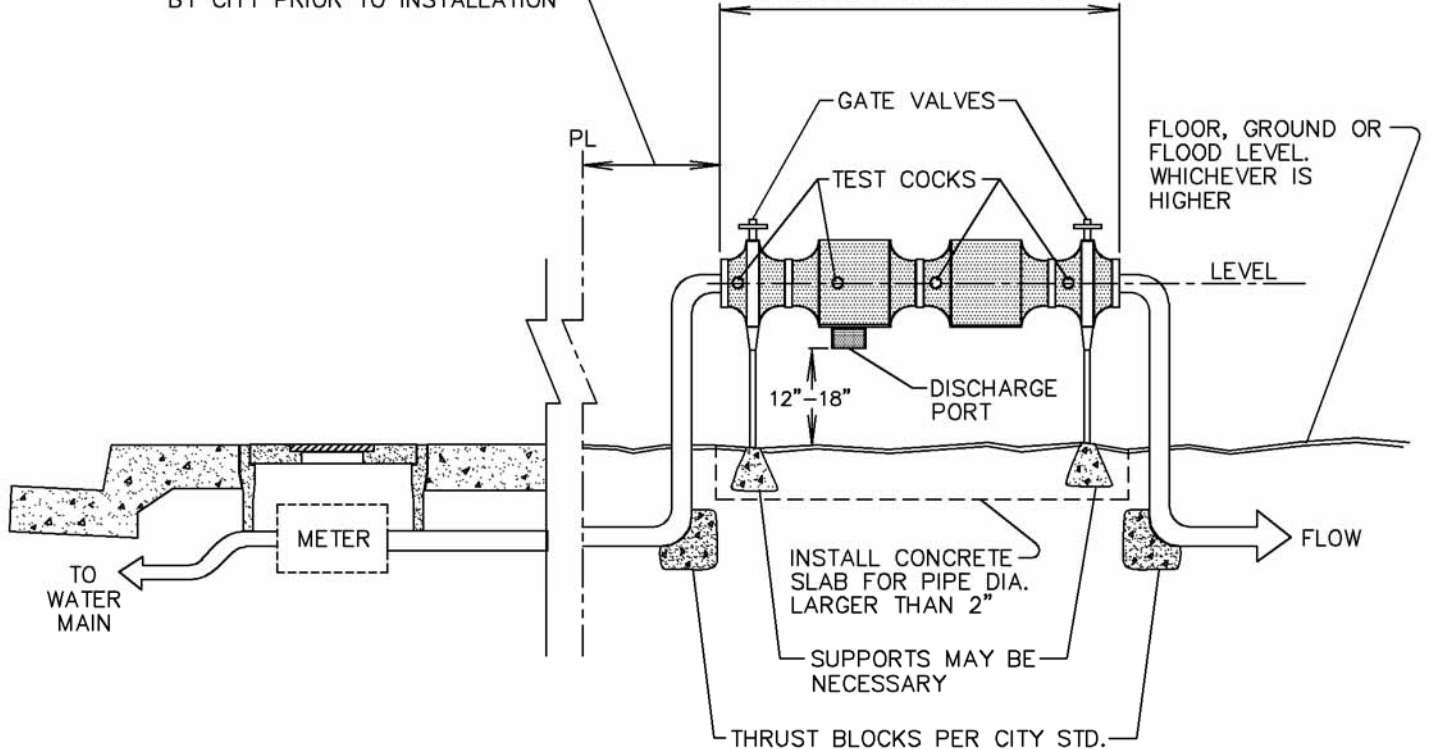


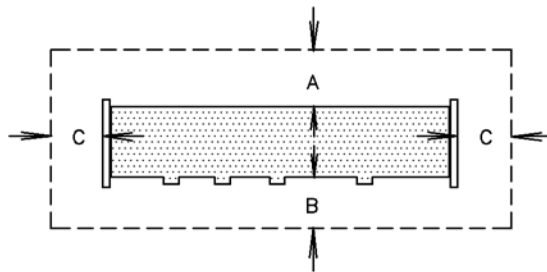
CITY PREFERENCE
FEBCO 825 Y

STATE APPROVED REDUCED
PRESSURE PRINCIPAL BACKFLOW
PREVENTION DEVICE ASSEMBLY

LOCATION MUST BE APPROVED
BY CITY PRIOR TO INSTALLATION



MINIMUM CLEARANCE			
SIZE / DC	A	B	C
1" - 3"	12"	18"	12"
4" & UP	24"	24"	12"



CLEARANCE LINE
TOP VIEW

CITY OF PORTERVILLE
ENGINEERING DIVISION

Harold L. Hill 2-15-99
CITY ENGINEER R.C.E. 20186 DATE

**REDUCED PRESSURE
BACKFLOW PREVENTER**

W-10

REV.