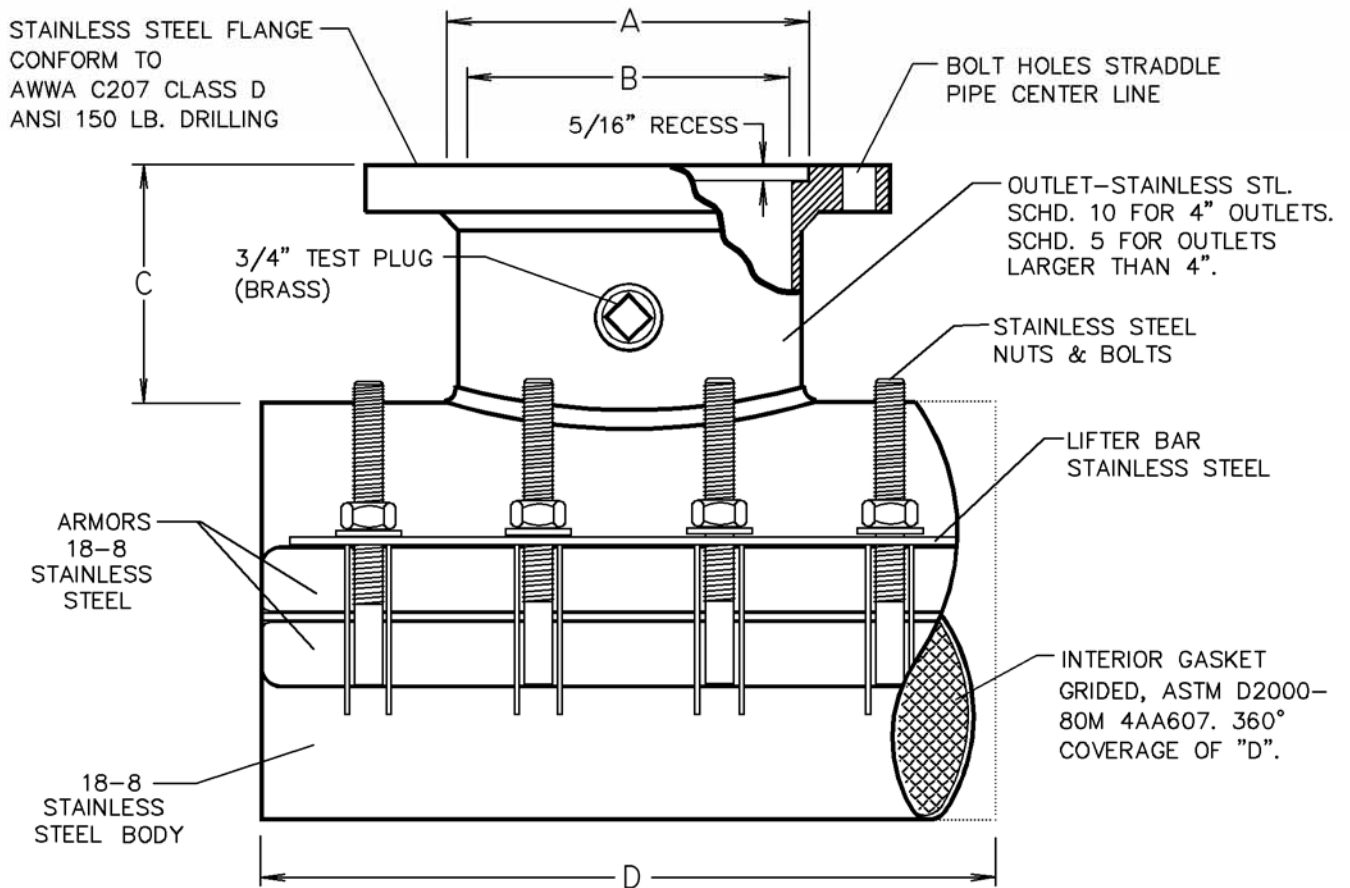


NOTE: ALL DIMENSIONS ARE IN INCHES.

NOM. PIPE SIZE	FLANGE SIZE	A	B	C	D	BOLT SIZE	NO. OF BOLTS
4" THRU 12"	4"	5-1/32	4-1/4	5-3/16	15	5/8	8
	6"	7-1/32	6-3/8	5-1/2	15	5/8	8
	8"	9-1/32	8-3/16	5-5/8	20	5/8	12
	10"	11-1/32	10-1/4	6-1/8	20	3/4	12
	12"	13-1/32	12-1/4	6-1/4	24	3/4	14
14"	4"	5-1/32	4-1/4	5-3/16	15	5/8	8
	6"	7-1/32	6-3/8	5-1/2	15	5/8	8
	8"	9-1/32	8-3/16	5-5/8	20	5/8	12
	10"	11-1/32	10-1/4	6-1/8	20	3/4	12
	12"	13-1/32	12-1/4	6-1/4	24	3/4	14
16"-18"	4"	5-1/32	4-1/4	5-3/16	15	5/8	8
	6"	7-1/32	6-3/8	5-1/2	15	5/8	8
	8"	9-1/32	8-3/16	5-5/8	20	5/8	12
	10"	11-1/32	10-1/4	6-1/8	20	3/4	12
	12"	13-1/32	12-1/4	6-1/4	24	3/4	14
20"-24"	4"	5-1/32	4-1/4	5-3/16	15	5/8	8
	6"	7-1/32	6-3/8	5-1/2	15	5/8	8
	8"	9-1/32	8-3/16	5-5/8	20	5/8	12
	10"	11-1/32	10-1/4	6-1/8	20	3/4	12
	12"	13-1/32	12-1/4	6-1/4	24	3/4	14



NOTE: FORD STYLE "FAST" TAPPING SLEEVE OR EQUAL APPROVED BY CITY ENGINEER.

CITY OF PORTERVILLE  
ENGINEERING DIVISION

*Harold L. Hill* 2-15-99  
CITY ENGINEER R.C.E. 20186 DATE

# TAPPING SLEEVE

W-12

REV.