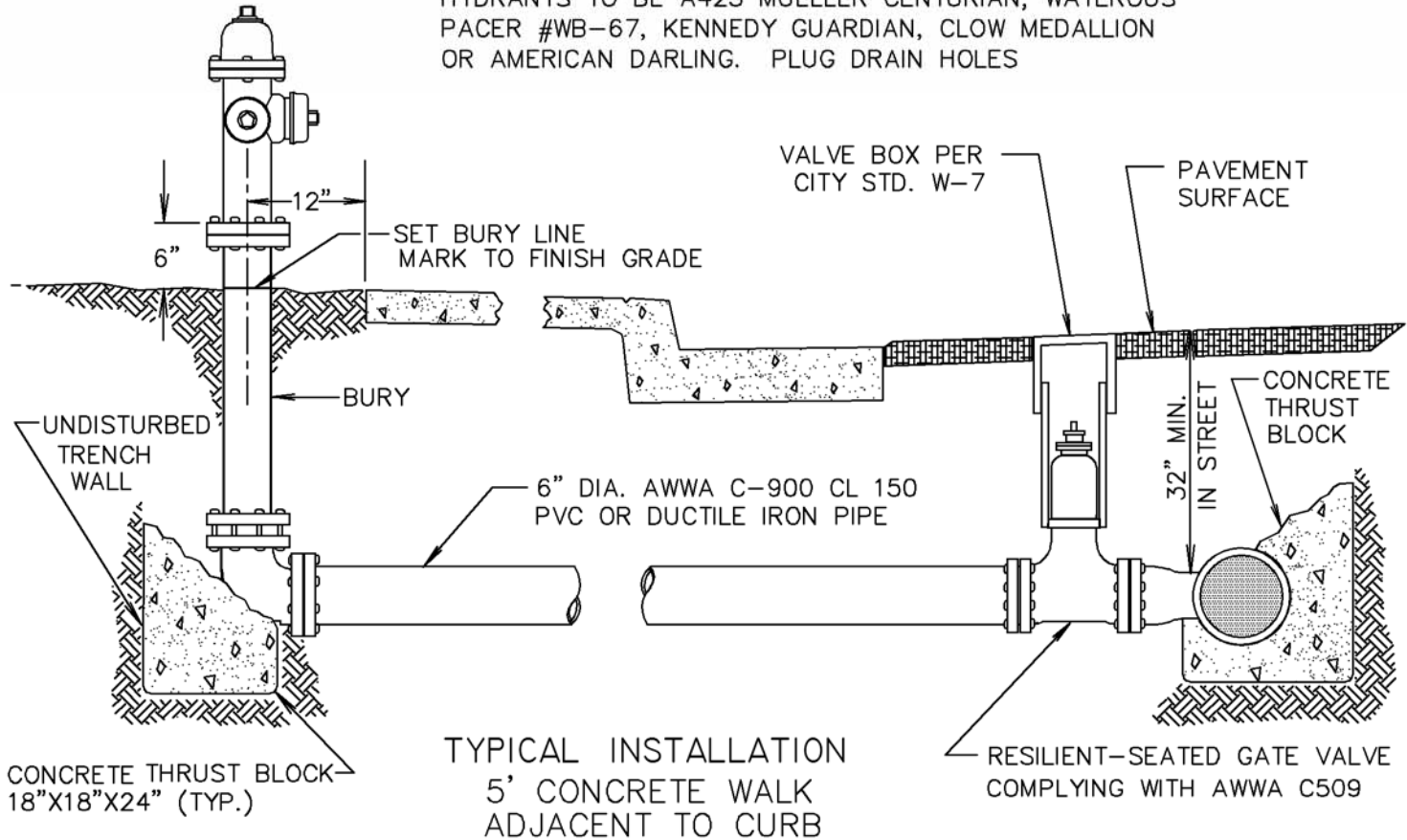


TYPICAL INSTALLATION
WALKS GREATER THAN 5' OR
NOT ADJACENT TO CURB

- GENERAL NOTES :
1. ALL HYDRANTS SHALL HAVE 2-2 1/2" N.S.T. HOSE NOZZLES AND 1-4" N.S.T. PUMPER NOZZLE.
 2. HYDRANT VALVE OPENING SHALL BE 5 1/4" MINIMUM.
 3. BURY SHALL BE 42".
 4. BURY SHALL HAVE RING TIGHT INLET.
 5. HYDRANT OPERATING NUT & CAP NUT TO BE STANDARD PENTAGON.
 6. HYDRANT BODY TO BE PAINTED "SAFETY YELLOW".
 7. INSTALL BLUE TWO-WAY REFLECTIVE TRAFFIC MARKER OPPOSITE F.H. LOCATION, 6" FROM ROAD CENTERLINE TOWARD F.H.

HYDRANTS TO BE A423 MUELLER CENTURIAN, WATEROUS PACER #WB-67, KENNEDY GUARDIAN, CLOW MEDALLION OR AMERICAN DARLING. PLUG DRAIN HOLES



TYPICAL INSTALLATION
5' CONCRETE WALK
ADJACENT TO CURB